



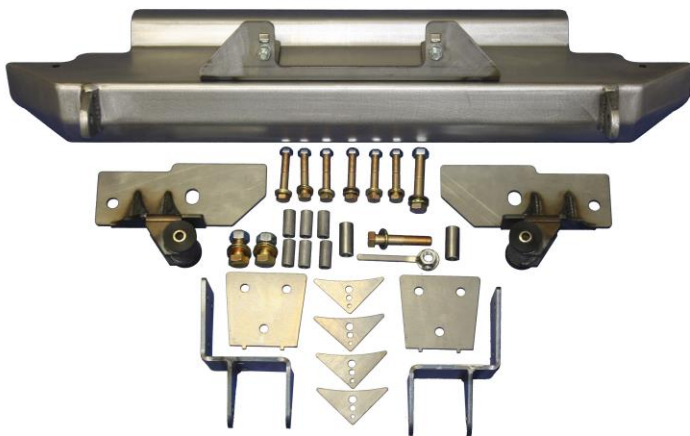
## INSTALL INSTRUCTIONS FOR DCU FULL-WIDTH AXLE KIT

Upgrading your differential to full-width axles on a 1976 to 1986 jeep CJ is one of the #1 upgrade owners want to do!! Dave's Customs Unlimited has made the process much easier with their front full-width axle kit. Tired of breaking your Dana 30 front end, then install a Dana 44 or Dana 60 front end with ease.

To install a full-width axle under the front of a CJ you must move the front springs outboard the frame. We have come up with the most complete kit on the market with the highest quality of parts. The kit utilized the conventional way with the shackles. This is a non-shackle reversal setup which we feel is a much superior setup for off-road use. All components are laser cut and CNC bent for a precise fit. Front mounts bolt on using factory holes and are integrated with the front winch mount Rock Crawler bumper. Rear mounts require drilling and welding and are designed to fit on the inside and outside of the frame, which sandwich the frame for superior strength, not like competitors that only weld to the outside of the frame and are prone to bending and cracking the frame! Front assembly adds a tremendous amount of extra strength to the front of the frame. Brackets are heavy-duty 1/4" thick and include high quality grade 8 mounting hardware with hardened flat washer and all metal lock nuts. Heavy wall D.O.M. tube spacers included for inside of frame. Includes heavy-duty 1 1/2" diameter polyurethane shackle bushings and spacers for frame mounts.

### CONTENTS OF KIT:

Qty:	Description:
1	CJ front bumper
1	Main eye full-width axle bracket (pair)
1	Full-width axle front bracket (pair)
6	3/4" x .120 DOM
2	7/8" x .120 DOM
4	Polyurethane bushings
2	Steel sleeve .50 x .750 x 3.0
4	Large corner gusset
1	Full-width axle kit tab assembly
	Hardware Kit



**PLEASE READ ALL INSTRUCTIONS BEFORE INSTALLING**

**STEP 1:** Start out by removing front suspension and front axle. Remove front shackle mounts and main eye mounts.

**NOTE:** Main eye mounts are riveted and welded to frame.



**SUGGESTIONS:** Grind or torch off lower rivet heads. Use a punch and knock rivets into frame. Use a cutoff wheel to cut weld on outer tab without cutting into frame. Mounts can then be removed from the frame.

**STEP 2:** Loosen and pull away brake lines and proportioning valve on drivers inside frame rail.

**NOTE:** Make sure factory weld on bottom of frame is cleaned up well and smooth so new mount will sit up tight and even on bottom of frame.

**STEP 3:** Use factory rivet holes to find center on original main eye mount. At center position, mark outside frame rail to locate new mounts. Mark center on new mounts and install on frame with center marks lined up and C clamp assembly on frame. Center punch holes and remove mount or leave it clamped to frame and use as guide. Drill with 1/2" drill bit through both sides of frame making sure drill is level.

**NOTE:** This location for the main eye mounts works fine for stock length springs. If using YJ springs, main eye mounts must be moved back so you have about 44" center-to-center on your mounts, front and rear. Confirm before drilling or welding.



**NOTE:** Make sure there are no obstructions on inside of frame (i.e. brake lines, wiring, etc.).

**STEP 4:** Drill through outside of frame only with 3/4" drill bit. Grind paint off outside of frame. Install spacers into holes on frame.



**NOTE:** Make sure spacers do not fall inside frame!

**STEP 5:** Attach mount to frame with supplied 1/2" bolts, flat washers, and lock nuts. Push mount tight up against frame and tighten mounting hardware securely.

**STEP 6:** Once installed, make sure brake lines and proportioning valve are secure to frame.

**NOTE:** Spacers may be slightly long due to varying frame widths. A lot of research and development has been undergone to fit most scenarios. With this in mind, spacer length may need to be adjusted.

**STEP 7:** Once mount is tight, gussets can be welded on and finish welding mount. Mount can also be welded to frame for extra strength.

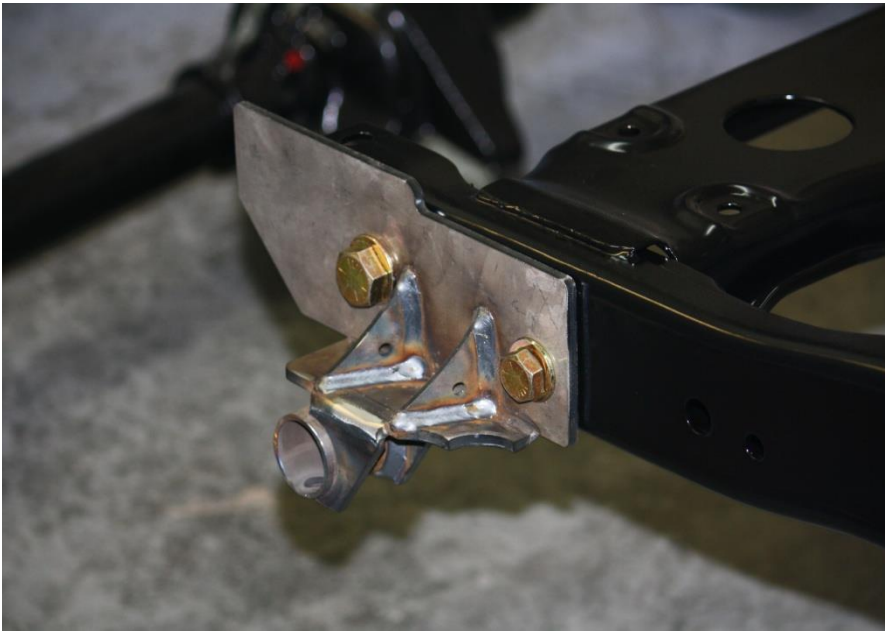


**STEP 8:** Now moving onto the front of the frame. Install two supplied 7/8" O.D. sleeves into factory holes on front of frame rails.



**NOTE:** Holes on left and right frame rails back 7" from front of frame. Holes may need to be slightly cleaned out with a die grinder.

**STEP 9:** Install front full-width axle brackets to frame with supplied hardware using 5/8" bolts in rear of brackets and 3/4" bolts in front holes which utilize factory holes in frame. Leave mounting hardware loose.



**NOTE:** Driver's side 5/8" bolt, which goes in behind steering box, uses tab with nut welded on.

**STEP 10:** Install front bumper over front brackets. Square up and level bumper. Tighten front bracket hardware and use C clamps and clamp front bumper to brackets.



**STEP 11:** Weld inside of bumper to brackets. Bumper then can be removed to finish welding. **NOTE:** Also finish welding front D rings on inside of bumper. Clean up and paint or powder coat, reinstall front bumper assembly. **NOTE:** Winch must be installed before reinstallation. Once installed and tightened, front shackle bushings can be installed.

**STEP 12:** Install springs, shackles, shocks, axle, etc.

**Your full-width axle kit is now complete and enjoy!!**

# SHIPPING AND RETURNS

## RETURN POLICY

Original sales receipt must accompany returns.

We accept returns for exchange or refund 7 calendar days after delivery of the product. At our sole discretion after 7 calendar days, we will offer an exchange or store credit only. Items must be in "new, unaltered, and unused condition". Definition of new, unaltered and unused condition is:

- -without showing signs of wear or damage in any way
- -within 7 calendar days of the delivery date (after 7 days no returns are allowed)
- **-must not be a special order or a custom order**
- -unless noted that it cannot be returned or has a different return policy time period other than that 7 days noted in that item's particular item description.

**All merchandise must be returned prepaid and insured at the customer's expense for total value of product.**

**DAMAGE CLAIMS:** All orders are carefully packed; however, mishandling by the carrier can result in damage. The carrier has the responsibility for the shipment from the time it leaves our warehouse until it is delivered to you. All claims for lost or damaged goods should be reported to the carrier not to Dave's Customs Unlimited, LLC.

If an item is incorrectly shipped by us please contact Customer Support immediately. Items that are defective and shipped from us or items that you did not order but received from us will qualify for store credit or a cash refund.

Refunds are contingent upon inspection of item(s) once we receive it.

There is a 20% restocking fee for returned items that are not being exchanged and are not damaged. Again you **MUST** contact us within 7 days if you intend to return ANY item back to our store. Items returned to us **AFTER** 7 days and **WITHOUT** contacting us will **NOT** be refunded.

Customer is responsible for all shipping costs if seller is not at fault.

Please contact customer service for more information on returning an item. Thank you.

**SHIPPING:** We try to keep all products in stock; however, sometimes we get caught without the item you may need on the shelf. If an item is out of stock, please allow 1-4 weeks for delivery.

**WARRANTY:** All merchandise is warrantied to be free from defects in materials and workmanship **prior** to installation.

Because all parts we sell are intended for use in heavy-duty or off-road applications, it is not possible to warranty or guarantee the performance of any items. Modification of your vehicle to enhance performance with parts sold by Dave's Customs Unlimited, LLC may create a dangerous condition which could cause serious bodily injury and the buyer hereby expressly assumes all risk associated with any such modifications. All parts sold by Dave's Customs Unlimited, LLC are for racing or off-road use only. Dave's Customs Unlimited, LLC will not accept responsibility for personal injury or property damage arising from the failure of any parts manufactured or sold by Dave's Customs Unlimited, LLC.

## ***Hold Harmless Agreement:***

1. In purchasing a Dave's Customs Unlimited, LLC product, I release, waive, discharge, and covenant not to sue Dave's Customs Unlimited, LLC officers, servants, agents, or employees from any and all liability, claims, demands, actions, and causes of action whatsoever arising out of or related to any loss, damage, or injury including death that may be sustained by me or anyone else, any property belonging to me, or anyone else whether caused by the negligence of the releasees or otherwise while working on, using, or any activity related to this product.
2. I am fully aware of risks and hazards connected with the use of this product and I elect to voluntarily engage in such use of this product knowing that the use may be hazardous to me and my property. I voluntarily assume full responsibility for any risks of loss, property damage, or personal injury including death that may be sustained by me or anyone else, or any loss or damage to property owned by me, or anyone else as a result of using this product whether caused by the negligence of releasees or otherwise.

3. I further agree to indemnify and hold harmless the releasees from any loss, liability, damage or costs, including court costs and attorney fees, that they may incur due to my use of this product, whether caused by negligence of releasees or otherwise.
4. It is my express intent that this Release and Hold Harmless Agreement shall bind the members of my family and spouse, if I am alive, and my heirs assigns and personal representative, if I am deceased, and shall be deemed as a release, waive, discharge, and covenant not to sue the above named releasees. I further agree that with this Waiver of Liability and Hold Harmless Agreement shall be construed in accordance with the laws of the State of Arizona.

By accepting this product, I acknowledge and represent that I have read the above Waiver and Liability and Hold Harmless Agreement, understand it and accept it voluntarily as my own free act and deed; no oral presentations, statements, or inducements, apart from the foregoing written agreement, have been made; I am at least eighteen (18) years of age and fully competent; and I execute this Release for full, adequate, and complete consideration fully intending to be bound by same.

**If you do not agree** with the preceding Hold Harmless Agreement, you may return the product and receive a full refund. Please contact a Dave's Customs Unlimited, LLC representative regarding the product in question. Once the product has been received by Dave's Customs Unlimited, LLC and inspected, a full refund will be issued.

**FIT and TOLERANCES:** All parts sold by Dave's Customs Unlimited, LLC are the results of countless hours of research, testing, fitting, and refining. There is a large variation in tolerance from vehicle to vehicle. In addition to the factory tolerances, most people install other than factory equipment (aftermarket add-ons). Dave's Customs Unlimited, LLC has done the best job we can to ensure that our parts fit with some of these possibilities. This is why Dave's Customs Unlimited, LLC installs "several slots" in which to mount our brackets and other products; however, you may find it necessary to grind, elongate, bend, or force the parts you buy to fit on your particular vehicle. Be sure that you want to install them before you modify them. Please use common sense when installing these parts and let us know how we can improve them.